

# MONTHLY MEMBERSHIP PROGRESS REPORT

LOCATION PAKISTAN

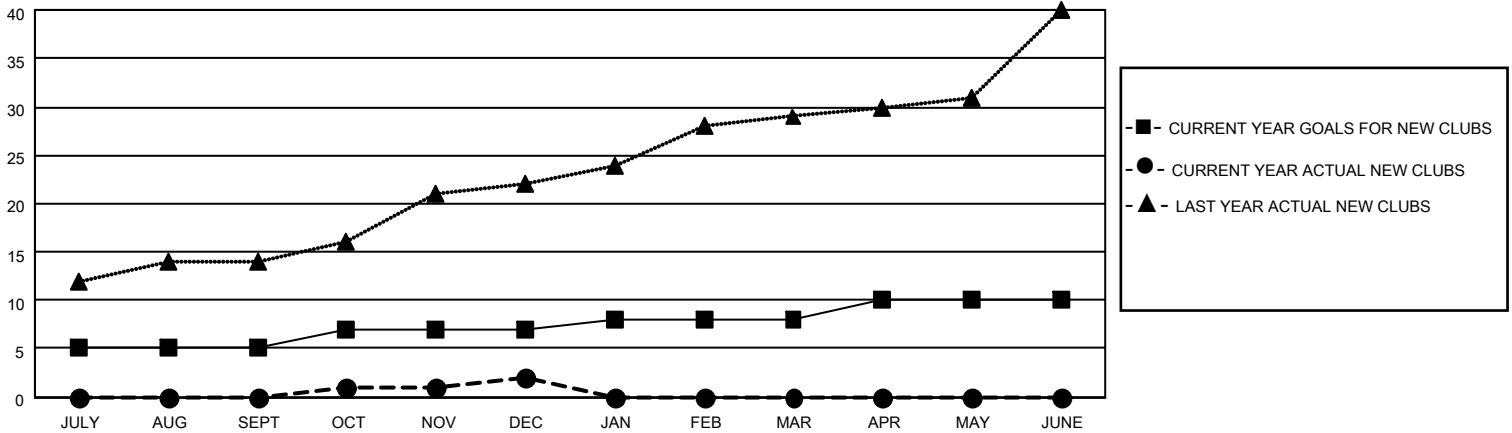
District 305 N1

Results as of: 12/31/2022

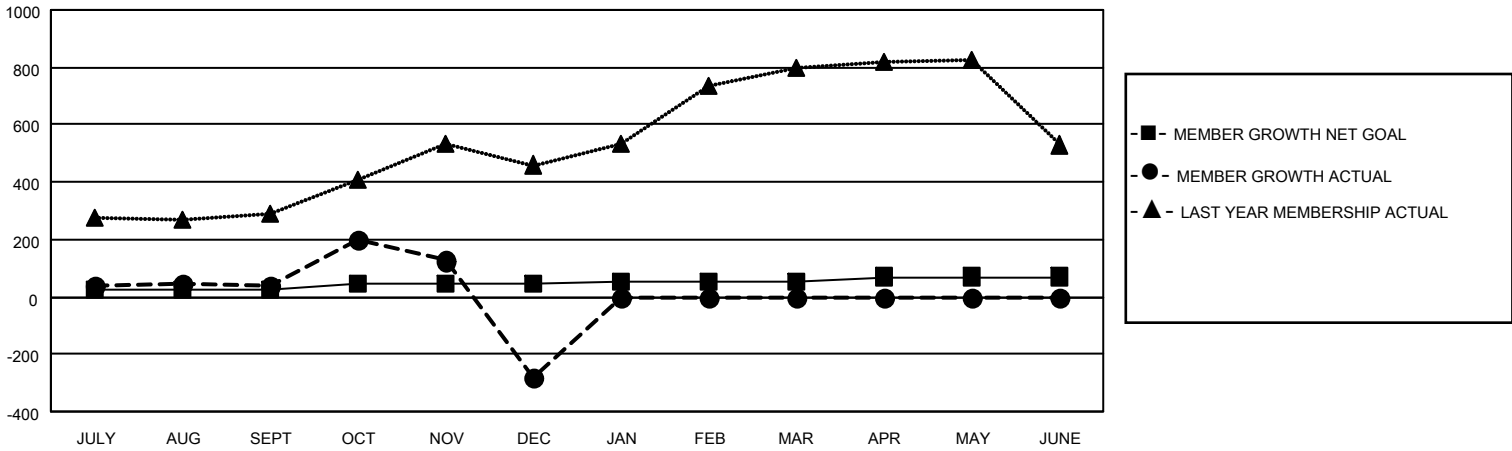
Clubs			
RESULTS FOR 2022-2023			
QUARTER	NEW CLUB GOAL	NEW CLUBS	DROPPED CLUBS
JULY/AUG/SEPT	5	0	2
OCT/NOV/DEC	2	2	11
JAN/FEB/MAR	1	0	0
APR/MAY/JUNE	2	0	0

Members			
RESULTS FOR 2022-2023			
QUARTER	MEMBER GROWTH NET GOAL	MEMBER GROWTH ACTUAL	DROPPED MEMBERS ACTUAL (including transfers)
JULY/AUG/SEPT	25	153	112
OCT/NOV/DEC	20	260	569
JAN/FEB/MAR	10	0	0
APR/MAY/JUNE	15	0	0

**GOALS AND ACTUAL NEW CLUBS CUMULATIVE**



**GOALS AND ACTUAL MEMBERS CUMULATIVE**



**DROPPED CLUBS: 13**

**52 CLUBS OF 148 ADDED 1 OR MORE NEW MEMBERS**

**GENDER DISTRIBUTION**

MALE	2,472 (77.86%)
FEMALE	703 (22.14%)
NON BINARY	0 (0.00%)
PREFER NOT TO ANSWER	0 (0.00%)

**DROPPED MEMBERS**

[CLICK HERE FOR CUMULATIVE MEMBERSHIP DATA](#)

DECEASED	0
CLUB CANCELLED	179
OTHER	502
<b>TOTAL</b>	<b>681</b>

TOTAL FAMILY UNIT MEMBERS 2,419

FAMILY MEMBERS PAYING HALF DUES 1,810